

Inner East Total: Stock 12204

**BURMANTOFTS &
RICHMOND HILL**
Stock: 4,401

**GIPTON , HAREHILLS &
OSMONDTHORPE**
Stock: 3,184

**P06
AREA HOUSING MANAGER
INNER EAST
x 1.0 FTE**

**F02
Housing Manager
(Ebor Gardens & Richmond Hill)
x 1.0 FTE**

**P02
Housing Manager
(Lincoln Green & Harehills)
x 1.0 FTE**

**P02
Housing Manager
(GIPTON)
x 1.0 FTE**

**S02
TEAM LEADER (TENANCY)
x 1.0 FTE**

**S02
TEAM LEADER (TENANCY)
x 1.0 FTE**

**S02
TEAM LEADER (LETTINGS)
x 1.0 FTE**

**S02
TEAM LEADER (LETTINGS)
x 1.0 FTE**

**S02
TEAM LEADER (TENANCY)
x 1.0 FTE**

**S02
TEAM LEADER (TENANCY)
x 1.0 FTE**

**C3
HOUSING
OFFICER
x 8.0 FTE'S**

**B3
HOUSING
ASSISTANT
x 4.0 FTE'S**

**C3
HOUSING
OFFICER
(BENEFITS)
x 1.0 FTE**

**C3
HOUSING
OFFICER
x 9.0 FTE'S**

**B3
HOUSING
ASSISTANT
x 5.0 FTE'S**

**C3
HOUSING
OFFICER
x 6.0 FTE'S**

**B3
HOUSING
ASSISTANT
x 3.0 FTE'S**

**C3
HOUSING
OFFICER
x 5.0 FTE'S**

**B3
HOUSING
ASSISTANT
x 2.0 FTE'S**

**C3
HOUSING
OFFICER
(BENEFITS)
x 1.0 FTE**

**C3
HOUSING
OFFICER
(SUPPORT)
x 1.0 FTE**

**B3
HOUSING
ASSISTANT
(LETTINGS)
x 2.0 FTE'S**

**C3
HOUSING
OFFICER
(SUPPORT)
X1.0 FTE**

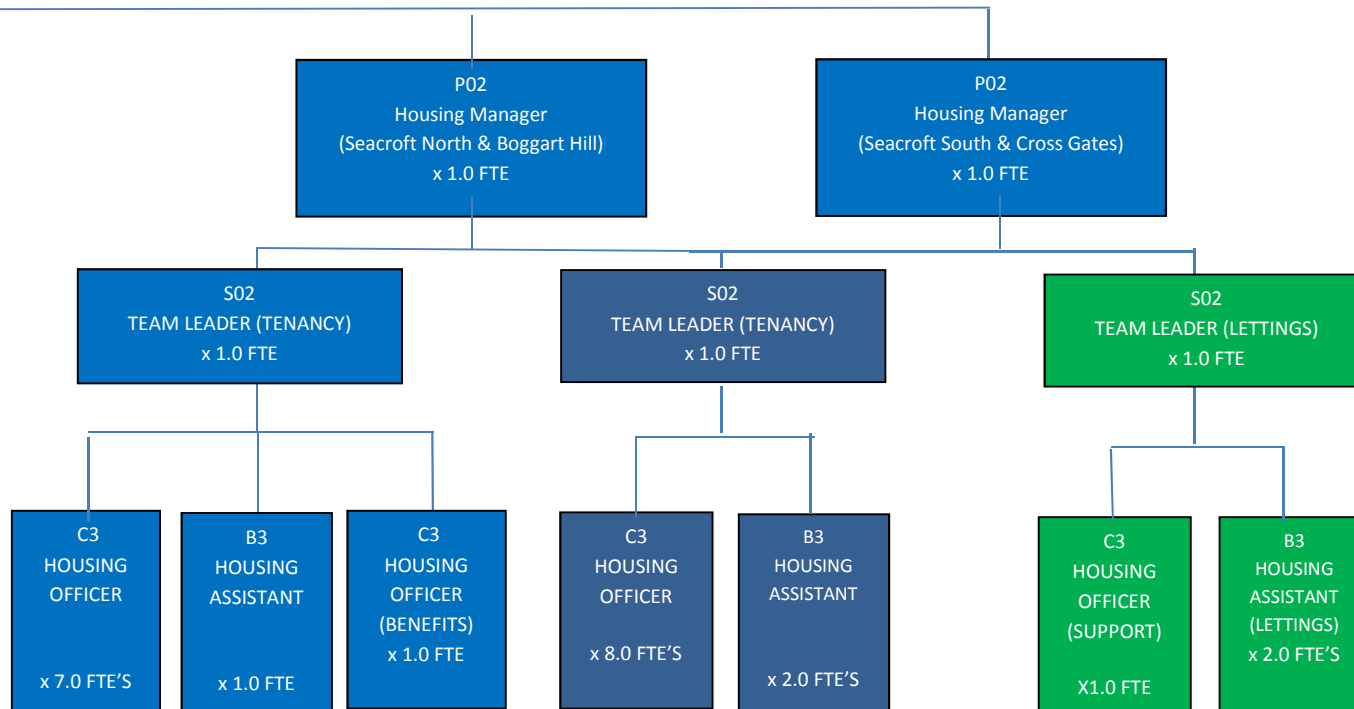
**B3
HOUSING
ASSISTANT
(LETTINGS)
x 2.0 FTE'S**

Job Role		FTE's
Area Manager	(PO6)	1.0
Housing Manager	(PO2)	5.0
Team Leader (Tenancy)	(SO2)	6.0
Team Leader (Lettings)	(SO2)	3.0
Housing Officer	(C3)	43.0
Housing Officer (Support)	(C3)	3.0
Housing Officer (Benefits)	(C3)	3.0
Housing Officer (Fraud)	(C3)	0.0
Housing Assistant (Lettings)	(B3)	6.0
Housing Assistant	(B3)	17.0
Total FTE's		87.0

Inner East (cont)

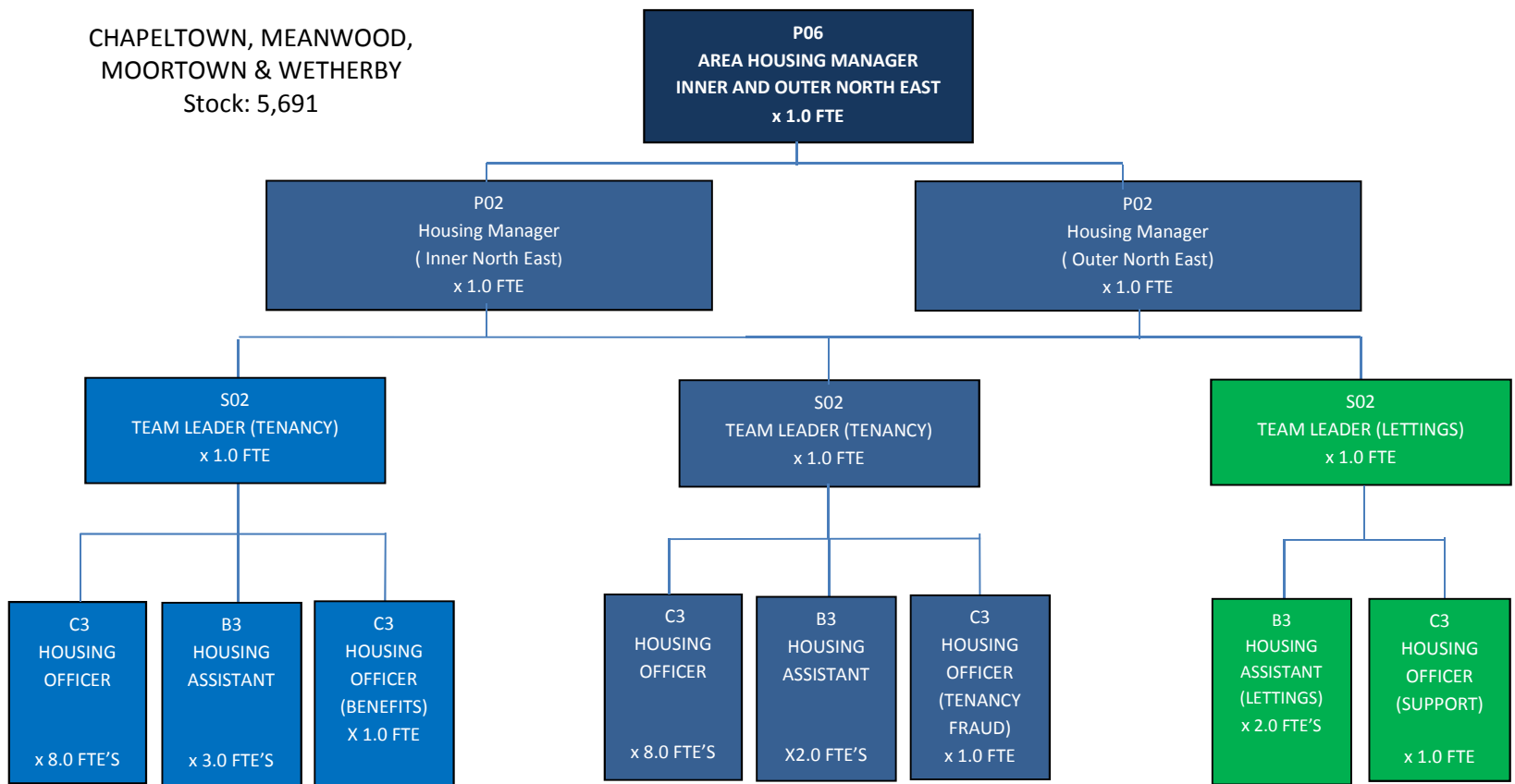
SEACROFT & CROSS GATES

Stock: 4,439



Inner and Outer North East Total Stock: 5691

CHAPELTOWN, MEANWOOD,
MOORTOWN & WETHERBY
Stock: 5,691



Job Role		FTE's
Area Manager	(P06)	1.0
Housing Manager	(P04)	0.0
Housing Manager	(P02)	2.0
Team Leader (Tenancy)	(S02)	2.0
Team Leader (Lettings)	(S02)	1.0
Housing Officer	(C3)	16.0
Housing Officer (Support)	(C3)	1.0
Housing Officer (Benefits)	(C3)	1.0
Housing Officer (Fraud)	(C3)	1.0
Housing Assistant (Lettings)	(B3)	2.0
Housing Assistant	(B3)	5.0
Total FTE's		32.0